

# Plastic Concepts Polypropylene Casework



---

## Description

Plastic Concepts, Inc.'s Polypropylene Casework is constructed of 1/2" and 3/8" thick stress relieved white polypropylene, all seams are fully welded for maximum strength and durability. Polypropylene is an extremely durable and non-corrosive material that cleans easily and does not stain. Polypropylene is a solid surface and maintains its appearance and color. Plastic Concepts, Inc. casework is equipped with quality components, from all stainless steel full extension drawer glides to polypropylene hinges. All edges are rounded for a safe and corner free work environment. The cabinets can be used individually or in series with other cabinets giving the user the ability to choose from the available styles to create a lab or Cleanroom to suit their own needs. Please see the attached charts for sizes and pricing. If there is a size or style that is not represented

drawings can be provided upon request. Modifications or custom designs are also available upon request.

To obtain a customized quotation, please contact PCI technical representatives with the following model number information:

## **Base Model Code:**

WC – Wall Cabinet  
BC – Base Cabinet with Drawer and Door  
BD – Base Cabinet with Door  
BE – Base Cabinet with Drawers  
WS – Wall Shelves  
WP – Wall Pass Thru  
CL – Closet  
OO – Other

## **Width / Depth / Height:**

XX - YY - ZZ

## **Modifiers:**

# SDH – Solid Door Hinged  
# CDH – Clear Door Hinged  
# SDS – Solid Door Slides  
# CDS – Clear Door Slides  
# FS – Fixed Shelves  
# AS – Adjustable Shelves  
# DR – Drawers  
# TT – Tiers  
# PA – Partitions  
# O1 – Other  
# CE – Blind Corner Extensions

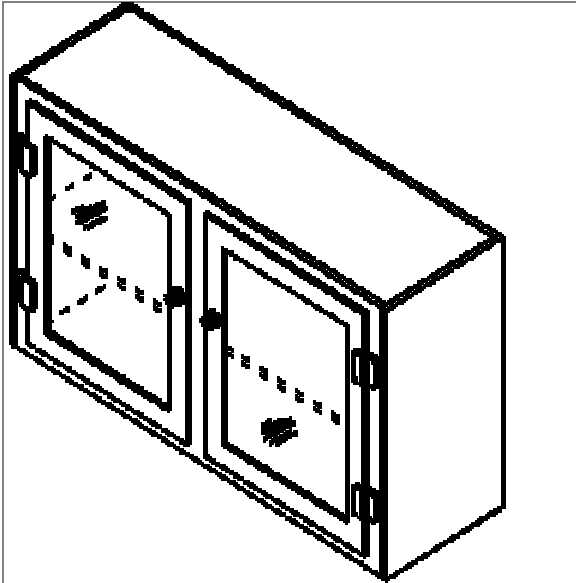
Plastic Concepts, Inc.'s upper casework is available standard with the following optional features:

- Clear acrylic sliding doors
- Hinged doors
- Two adjustable shelves
- Open shelf units
- Full wall storage cabinets
- Blind corners
- Security cabinets (key lock)
- Peg board back panels
- Internal dividers

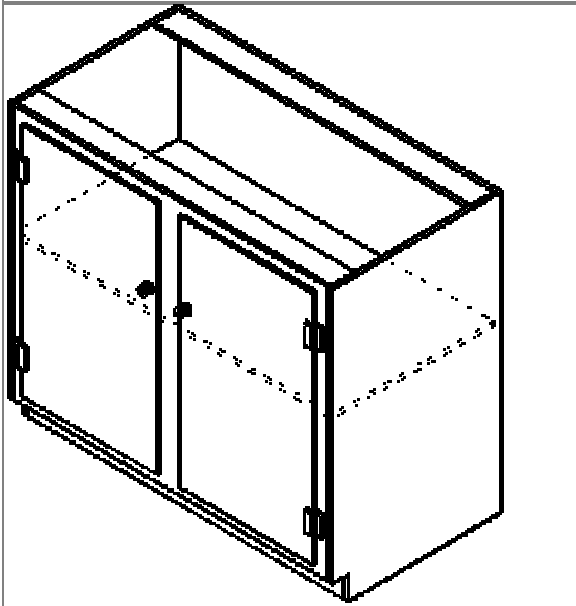
Plastic Concepts Polypropylene Casework and storage units are designed to meet or exceed a wide variety of uses and environments. PCI can design or modify any casework to maximize the use of valuable space.

PCI carries a wide variety of all plastic fixtures in polypropylene, PVDF, and PVC including:

- Goosenecks
- Deck and wall mounted gas turrets
- Needle valves
- DI and N2 spray guns aspirators

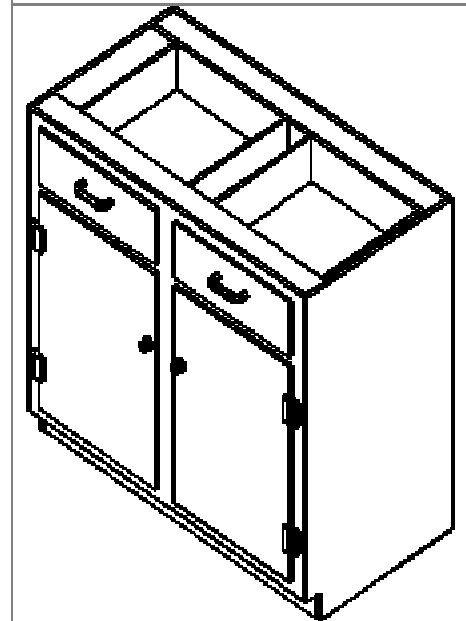
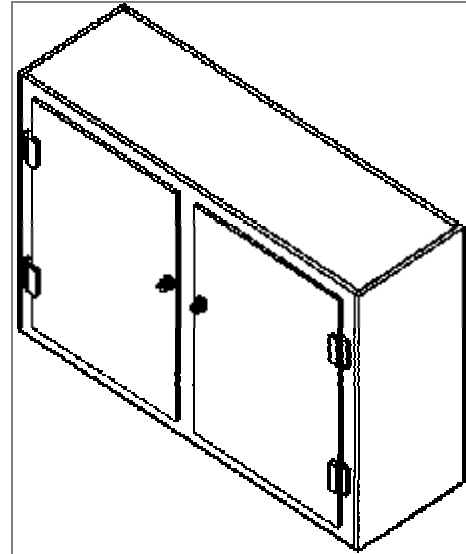


Standard 4-foot Wall Cabinet Casework

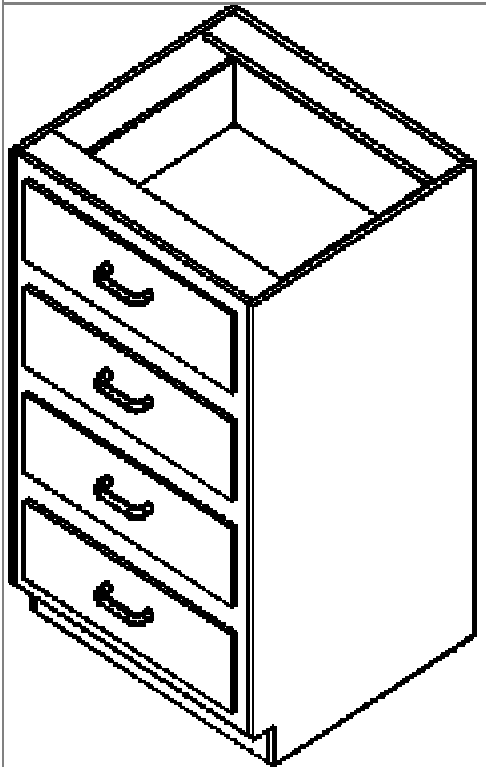
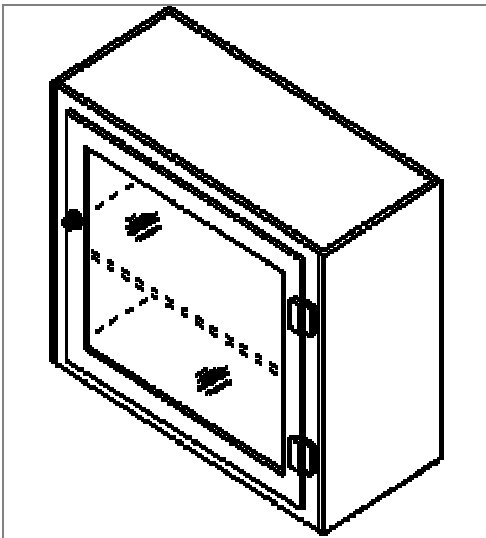


Standard 4-foot Base Cabinet Casework

Description	W x H x D
base cabinet drawer/door	18" x 30" x 22"
	24" x 30" x 22"
	36" x 30" x 22"
	48" x 30" x 22"
base cabinet three drawer	18" x 30" x 22"
	24" x 30" x 22"
	36" x 30" x 22"
	48" x 30" x 22"
base cabinet four drawer	18" x 30" x 22"
	24" x 30" x 22"
	36" x 30" x 22"
	48" x 30" x 22"
base cabinet acid storage	18" x 30" x 22"
	24" x 30" x 22"
	36" x 30" x 22"
base cabinet sink unit	18" x 30" x 22"
	24" x 30" x 22"
	36" x 30" x 22"
base cabinet sink w/ shelf	18" x 30" x 22"
	24" x 30" x 22"
	36" x 30" x 22"
base cabinet blind corner	48" x 30" x 22"
	55" x 30" x 22"
	65" x 30" x 22"
base cabinet knee space	18" x 30" x 22"
	24" x 30" x 22"
	36" x 30" x 22"



Standard 4-foot Casework



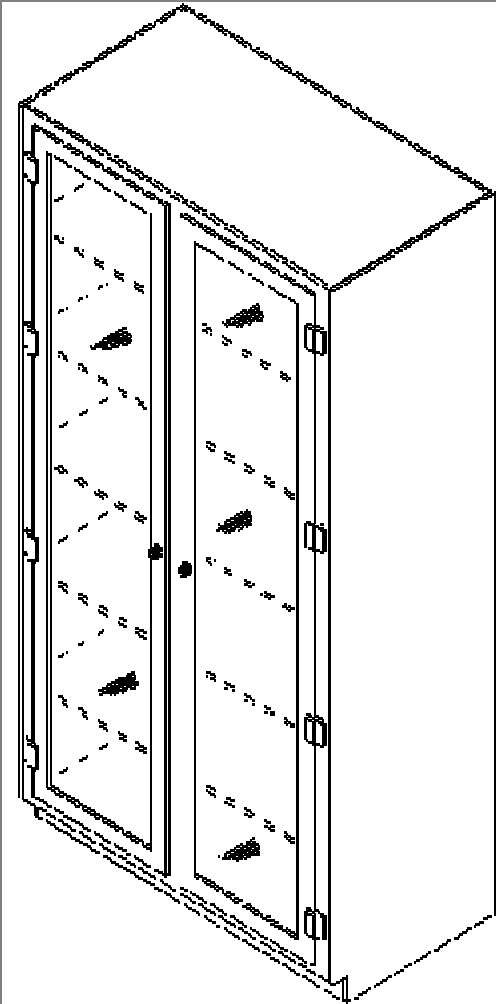
Standard 2-foot Casework

Description	W x H x D
upper cabinet clear hinged door	18" x 30" x 13"
	24" x 30" x 13"
	36" x 30" x 13"
	48" x 30" x 13"
upper cabinet solid hinged door	18" x 30" x 13"

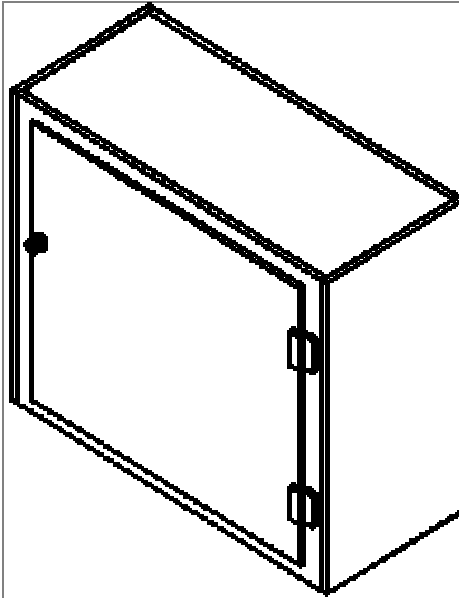
	24" x 30" x 13"
	36" x 30" x 13"
	48" x 30" x 13"
upper cabinet clear sliding doors	18" x 30" x 13"
	24" x 30" x 13"
	36" x 30" x 13"
	48" x 30" x 13"
upper cabinet solid sliding doors	18" x 30" x 13"
	24" x 30" x 13"
	36" x 30" x 13"
	48" x 30" x 13"
upper cabinet pass thru sliding clear doors	18" x 30" x 13"
	24" x 30" x 13"
	36" x 30" x 13"
	48" x 30" x 13"
upper cabinet pass thru hinged clear doors	18" x 30" x 13"
	24" x 30" x 13"
	36" x 30" x 13"
	48" x 30" x 13"
upper cabinet blind corner hinged door	18" x 30" x 13"
	24" x 30" x 13"
	36" x 30" x 13"
	48" x 30" x 13"
upper cabinet open shelves	18" x 30" x 13"
	24" x 30" x 13"
	36" x 30" x 13"

Description	W x H x D
wall cabinet clear hinged door	30" 84" 22"
	36" 84" 22"
	48" 84" 22"
	48" 30" 13"
	30" 84" 22"
	36" 84" 22"
	48" 84" 22"

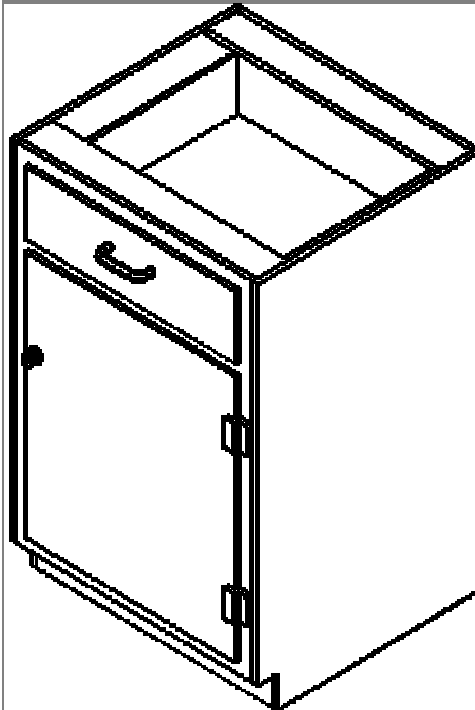
Counter Top with
3/4" polypropylene white
3/4" polypropylene black
1" polypropylene white
1" polypropylene black
3/4" polyethylene white
3/4" polyethylene black
1" polyethylene white



Standard 4-foot Closet Casework



Standard 2-foot Wall Cabinet Casework



Standard 2-foot Base Cabinet Casework

146 Rangeway Road N. Billerica, MA 01862  
Phone: (978) 663-7996 Fax: (978) 663-7880  
E-mail: [info@plastic-concepts.com](mailto:info@plastic-concepts.com) [www.plastic-concepts.com](http://www.plastic-concepts.com)